

Community Meeting

Proposed Intermediate Boundary Change for Willow Park Jr. PS, George B. Little PS, and Tecumseh Sr. PS

Monday, November 27, 2017

This presentation is available on the TDSB public web site at www.tdsb.on.ca.
Click on **Accommodation Reviews** at the bottom of the page.



Agenda

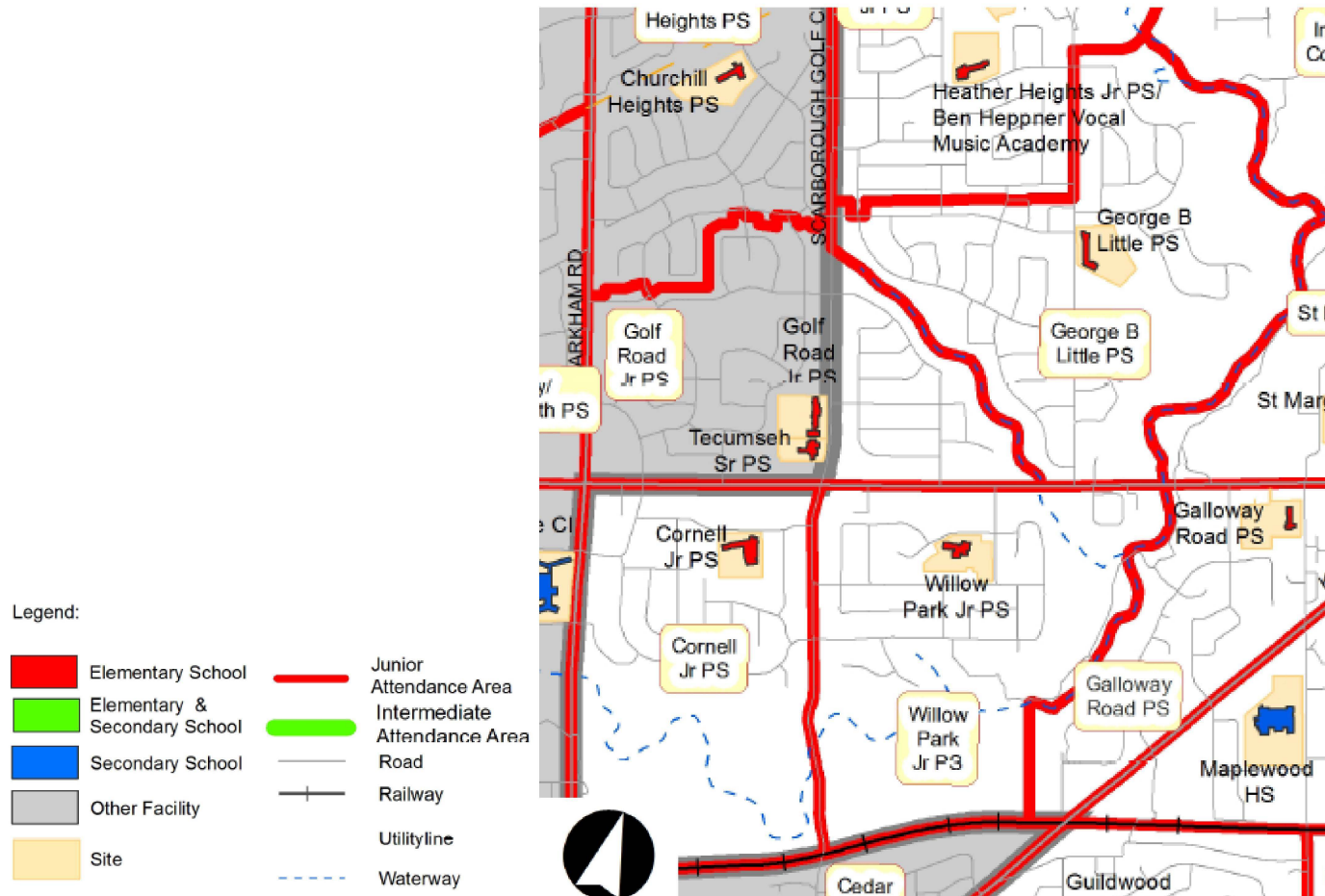
7:00 p.m. to 9:00 p.m.

1.	Welcome and Introductions
2.	Background – Why are we here?
3.	Options Considered
4.	Proposed Boundary Change
5.	Questions, Answers and Feedback from the Community
6.	Next Steps
7.	Adjournment

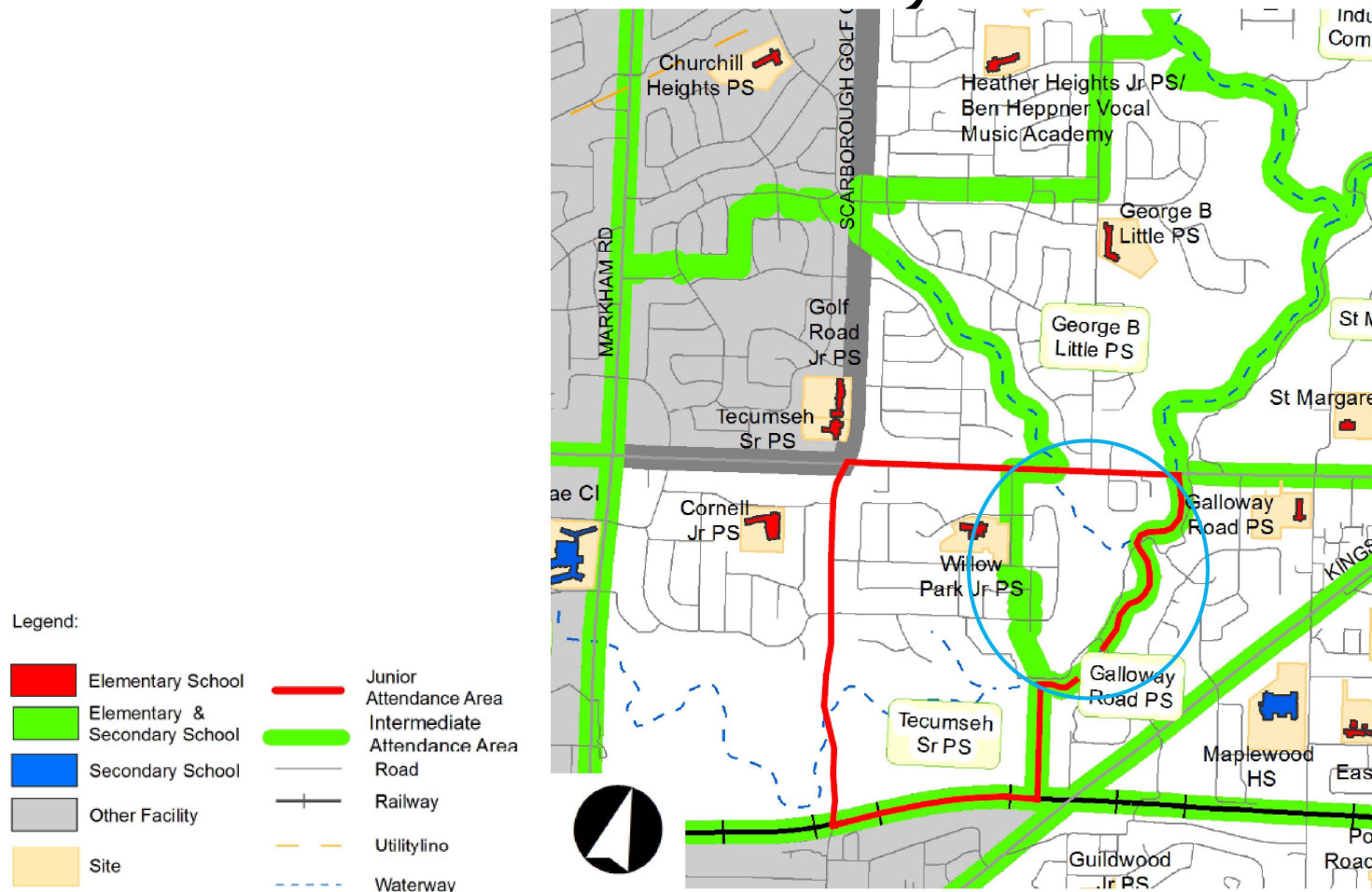
Background: 2003

- Why are we here: Dividing Willow Park Jr PS graduating classes by address to two different schools
- Between 1999 and 2002, Tecumseh Sr. PS experienced notable accommodation pressures
- Tecumseh Sr. PS's utilization rate consistently over 100%
- The split intermediate attendance area for Willow Park Jr. PS students (Tecumseh Sr. PS and George B. Little PS) has reduced enrolment at Tecumseh Sr. PS by approximately 30 -40 students per year

Background: Junior Attendance Areas



Background: Intermediate Attendance Boundary



Current Review

- Guided by the Long Term Program & Accommodation Strategy 2017-2026
 - Provides program and accommodation drivers
 - Identifies issues and gaps across the system & studies to address those issues / gaps
 - Key accommodation driver: Split attendance areas
- Impacted Schools: George B. Little PS, Tecumseh Sr PS, and Willow Park Jr PS
 - Guiding concept for study: Review possibility of realigning the intermediate attendance boundary for Willow Park Jr PS students

Boundary Change Review Process

STEP 1

Long Term
Program
Accommodation
Strategy (LTPAS)

STEP 2

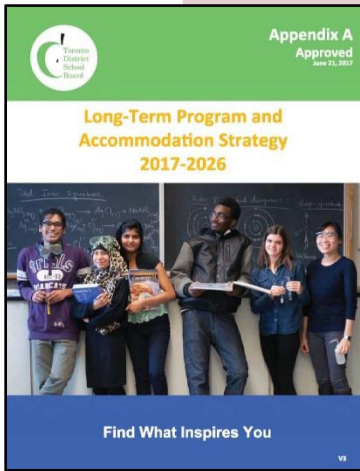
Local Feasibility
Team (LFT) is
formed

STEP 3

Boundary
Change Public
Meeting

STEP 4

Planning and
Priorities
Committee and
Board of
Trustees



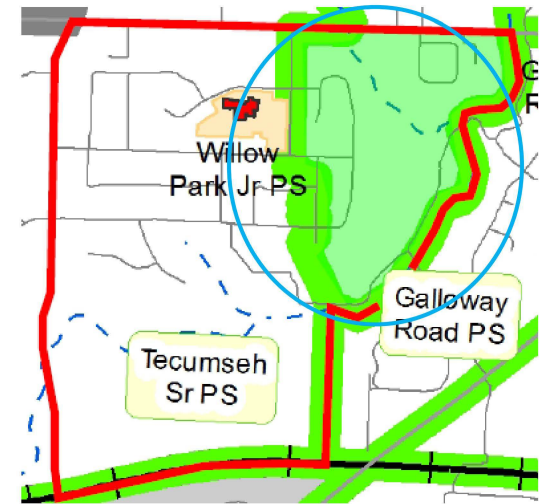
- Comprised of superintendents, principals, trustees and central staff
- Review data, discuss impacts of proposed changes
- Make recommendations

- Minimum of one public meeting is held
- Review data, discuss impacts of proposed changes and receive feedback

- Central staff present recommendations to Board of trustees
- Board makes final decision on recommendations

Grade 7 Pupils in George B Little PS IAA (south of Lawrence Ave)

- Annually: 23 Grade 7 students live in the subject area
- 17 of those 23 generally attend George B. Little PS
- Majority of remaining students attend specialized programs
- On average, a total of 34 Willow Park Jr PS graduates attend George B. Little PS annually



Options Considered

1	Keep the Status Quo
	<p>Comments:</p> <ul style="list-style-type: none">• Does not meet an accommodation driver outlined in the LTPAS• Unnecessarily divides students in same grade cohort
2	Realign Willow Park Jr. Intermediate Attendance Boundary
	<p>Comments:</p> <ul style="list-style-type: none">• Meets LTPAS driver and allows Willow Park Jr PS graduates to attend Grade 7 – 8 together• Minor impact to George B. Little PS enrolment• Contributes to a healthy enrolment at Tecumseh Sr PS

Options Considered (2)

3	Grade Range Change at Willow Park (JK – Grade 8)
	<p>Comments:</p> <ul style="list-style-type: none">• Meets LTPAS goal and allows Willow Park Jr PS graduates to attend Grade 7 – 8 together• Keeps students at Willow Park Jr PS through Grade 8• Ongoing discussions with the Ministry of Education & City of Toronto, re: potential child care at Willow Park Jr PS• Impacts Tecumseh Sr PS and other feeder schools

Status Quo Enrolment & Utilization Rates

School	Capacity (2017-18 LTPAS)	2016	2017	2018	2019	2020	2021	2026
Willow Park Jr. PS	563	372	381	357	337	319	305	300
		66%	68%	63%	60%	57%	54%	53%
George B. Little PS	522	432	397	409	422	417	411	385
		83%	76%	78%	81%	80%	79%	74%
Tecumseh Sr. PS	262	251	245	222	227	228	225	177
		96%	94%	85%	87%	87%	86%	68%

- Modeling does not include potential impacts of new child care facility at Willow Park Jr. PS

Projected Enrolment & Utilization Rates: Proposed Boundary Realignment

School	Capacity (2017-18 LTPAS)	2016	2017	2018	2019	2020	2021	2026
Willow Park Jr. PS	563	372 66%	381 68%	357 63%	337 60%	319 57%	305 54%	300 53%
George B. Little PS	522	432 83%	397 76%	409 78%	405 78%	383 73%	377 72%	351 67%
Tecumseh Sr. PS	262	251 96%	245 94%	222 85%	244 93%	262 100%	259 99%	211 81%

- Model assumes implementation starts in 2019 (17 Grade 7s annually)
- Existing George B Little PS students and siblings can be 'grandparented'
- Modeling does not include potential impacts of new child care facility at Willow Park Jr. PS

Proposed Realignment of Intermediate Attendance Boundary



Questions, Answers and Feedback from the Community

Next Steps

- Report summarizing recommendation to go to the Central Accommodation Team (CAT) – December 2017
- We are targeting the Planning and Priorities meeting for the February 2018 Board Cycle
 - Confirmed dates for Board and Planning and Priorities will be approved by Trustees' on December 4
- If approved by the Board of Trustees, implementation is planned for September 2019

Adjournment

Thank you!

This presentation is available on the TDSB public web site at
www.tdsb.on.ca.

Click on **Accommodation Reviews** at the bottom of the page.

